

# MICHAUX MANOR



A Personal Care Community

## Welcome to your beautiful mountain getaway!

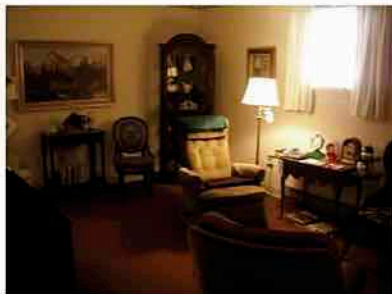
Just 'down the road' from the renowned Totem Pole Playhouse, Caledonia State Park, Caledonia Golf Course and other attractions, you will wonder why you didn't visit our exquisite and charming community sooner!

As a licensed Personal Care provider, Michaux Manor boasts a friendly, caring and knowledgeable staff who will stop at nothing to exceed your expectations because their philosophy is simple, **"everything counts!"**

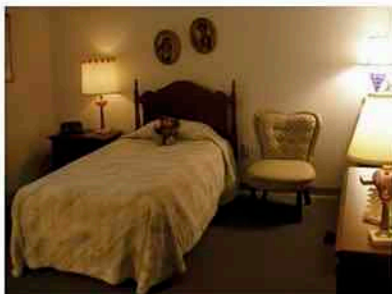
If you, a family member, or a friend are ready for more help in your daily life, then you've found the perfect place! Scenic, hospitable, and active with a range of physically and intellectually challenging activities, there are so many new friends waiting to meet you!

## Call ahead for a free tour and complementary meal!

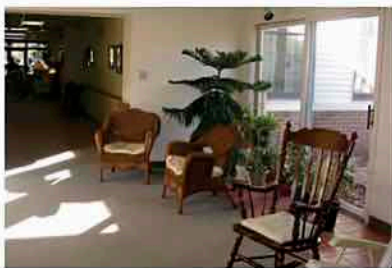
We will be happy to tell you about our other services and programs to make your life better while you discover this safe and friendly alternative to the many pretentious senior care centers out there!



sample living room



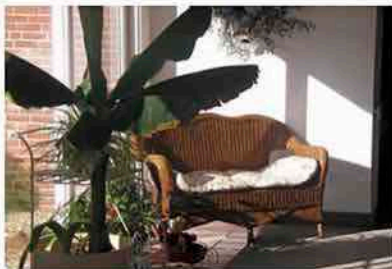
sample private bedroom



our cheerful sun room



our dining room



our patio sun room

## We're not just another pretty place!

Our Capable Administrator, Ashely Appenzellar, LPN and Clinical Care Coordinator, Dakota Hall, work closely to make certain you or your loved ones receive the very best in quality care - period.

- NO levels of Care!
- NO Admission Fee!
- Respite Care Program
- Hospice Care Program
- Home Health Services

**Our Respite Care Program** - If you are caring for a loved one at home and need a break, we are proud to offer comprehensive care for your loved one in a fully furnished room. Ask us about our affordable program rates!

**Hospice Care Program** - End of life is never an easy time but we're here for you. We can handle all of the many details to make certain your loved one receives the compassion and quality of care they deserve.

**Home Health Services** - Our thoughtful in-home services are designed to meet your needs. Our professional care team at Michaux Manor can help maintain your health, and personal lifestyle.

717-749-5000 • administrator@michauxmanor.com • www.michauxmanor.com

11302 South Mountain Road, Fayetteville, PA 17222